

# Herzlich Willkommen! WELCOME



## EXPLORING THE PAST AND DISCOVERING THE FUTURE

Welcome to Perry County, Missouri where German culture abounds and faith flourishes. We invite you to visit one of our many cultural sites, museums or natural areas.

Discover the beauty, St. Mary's of the Barrens church established in 1818 predates the founding of the State of Missouri. The seminary, chartered in 1823 is the oldest institution of higher learning west of the Mississippi in the United States. Today, it serves as the National Shrine of Our Lady of the Miraculous Medal.

Explore the history, Concordia's Log Cabin College in Altenburg served as the first college for the Lutheran Church-Missouri Synod and was also the first Lutheran college west of the Mississippi. Today, it commemorates the German Lutheran migration of 1838-1839 and is the birthplace of the founding of the Lutheran Church-Missouri Synod which is professionally interpreted at the Lutheran Heritage Center & Museum.

Experience the heritage, just over the hill in Frohna, the Saxon Lutheran Memorial is one of the best living history museums in America's Midwest. Travel back in time with German immigrants to a village of preserved log homes built in the 1800's. See how they lived, worked and cultivated a life in rural Missouri.

Remember the importance, Missouri's National Veterans Memorial is a must stop for anyone traveling in Mid America! See the only full size exact replica of the Vietnam Veterans Memorial outside of Washington D.C. Experience a place of healing, reflection and honor dedicated to our military veterans.

Imagine the adventure, Tower Rock is a natural treasure unique to Perry County and the Mississippi River. Made famous by greats such as Lewis & Clark, Mark Twain and President Ulysses S. Grant. See the wonder.

You may celebrate your stay here during every season with annual special events, shopping, wine and craft beer tastings or just simply relax and enjoy the downhome hospitality and charm that is, Perry County.

## Perry County History

Perry County is bounded on the north by Ste. Genevieve County, on the east by the Mississippi River, on the south by Cape Girardeau and Bollinger Counties and the west by Madison, St. Francois counties.

Perry County was named after Commodore Oliver Hazard Perry, a distinguished American naval officer. He was one of the great heroes of the War of 1812. The county was named and organized May 21, 1821 in the home of Bede Moore. At this time, the county officers were appointed, and the county was divided into three townships- Bois Brule, Brazeau and Cinque Homme. This division was later changed, and we now have eight townships: the original three plus Central, St. Mary's, Salem, Saline and Union. By 1673, the French coming down from Canada controlled the area that became Missouri. They were the first to describe a Perry County landmark, Grand Tower Rock. It was not until the end of the French and Indian War (1754-1763) that land west of the Mississippi was turned over to the Spanish. It was actually 1770 before the Spanish took control and brought Delaware and Shawnee Indians to the area to act as buffers between European settlers and the Osage Indian who were west of the area. The largest Shawnee village was in the Uniontown- Old Appleton area and several small camps of Delaware were established in the eastern and northern parts of what became Perry County.

In 1795, Spanish Land Grants were issued and those who came between 1795-1803 were the first settlers. Between 116 and 145 grants were given by the Spanish within the borders of Perry County. Forty-one of these grants were to people from Kentucky who had the same background and who lived in the same general area in Kentucky. They were the descendants of the English Catholics and more commonly known as the Maryland Catholics who settled St. Mary of the Barrens. Only one other group of people came during the Spanish era- the Burns family. This group was from Pennsylvania while most other early settlers came from Southern states. In 1800, the Spanish secretly sold the land back to France. The United States then purchased the land from France in the 1803 Louisiana Purchase. In 1819 a group of Methodists came from North Carolina and bought land in what is now the Longtown area. They built a log cabin church known as York Chapel in 1826. A group of Presbyterians from several counties in North Carolina settled in the Brazeau area in 1817. They built a church on the site where the Presbyterian Church of Brazeau stands today. Two decades later, they were instrumental in the survival of the early German Saxon Lutherans. Between 1837 and 1839, French and German (Catholics) immigration to Perry County began. They left their homelands because of the economic conditions and overpopulations of their towns and cities. In 1839, over 700 German Saxon Lutheran settlers came to settle in the Wittenberg-Altenburg area. The French immigration slowed after the 1840's, but the Germans kept arriving through the 1870's when families from Belgium made their home in the Bois Brule Bottoms. Apart from the migrations, individuals or families came to Perry County from Italy, Spain, Poland, Holland, Switzerland, the Netherlands and England. They also came from every state in the Union. Perryville was the first town in the county, created in 1831 in order to have a place to build a courthouse. Other small towns grew up around settlements. Brazeau grew into a small village around its Presbyterian church. The Abernathy settlement became Longtown with its York Chapel. Altenburg, Wittenberg and Frohna were the centers of the Saxon settlements. Later villages grew around stores or mills; others were laid out with lots which were sold by individuals who simply believed there was a need for a town on that spot. Brewer, Claryville, Menfro and Lithium were all built that way. Claryville had a river landing, Menfro had a railroad, and Lithium had a mineral spring.

## Recreation and Leisure (cont.)

**Perryville Country Club Golf Course**  
1111 Big Spring Blvd.  
573-547-8032

**Perry Park Center**  
800 City Park Lane  
573-547-7275  
105,000 sq. ft. facility that includes the Riverside Regional Library, indoor aquatic center with meter lap lanes, slide and diving boards, a gymnasium with six basketball goals and two volleyball courts, two racquetball courts, weight and cardio facilities, an elevated track and a performing art center which offers first-run motion pictures and live theater.



**1879 Old Appleton Iron Bridge**  
Last bridge of its kind still in its original location.  
[www.oldappleton.com](http://www.oldappleton.com)



**Perry County Heritage Tourism**  
2 W. Ste. Maries Street  
573-517-2069

*Get social with us...*  
[www.visitperrycounty.com](http://www.visitperrycounty.com)



## GERMAN CULTURE ABOUNDS!



Imagine Yourself Here in  
**Perry County**

## MONTHLY EVENTS

### April

Cruise In  
Mississippi River  
Scenic Drive

### May

Cruise In  
Home Brew Block  
Party  
Mayfest  
Old Timers Day

### June

Cruise In  
Bikers on the Square

### July

Cruise In  
Play Day at the Park  
Antique Tractor Ride  
Adventure

### August

Cruise In  
Senior Games  
Seminary Picnic  
Night of Thunder

### September

Cruise In  
East Perry Community Fair

### October

Cruise In  
Roctoberfest  
Moonlight Madness  
Arts and Crafts Fair  
Saxon Lutheran Memorial Fall  
Festival

### December

Christmas on the Square  
Brazeau Christmas Walk  
Lutheran Heritage Center  
Christmas Tree Exhibit  
Christmas Country Church Tour  
Live Nativity at Saxon Lutheran  
Memorial



Enjoy Yourself Here in **Perry County**



# Accommodations

## Bed & Breakfast Inns

**Willow House Bed and Breakfast**  
220 E North Street  
573-547-9900  
Willowhousebandb.com  
Built in 1901 relax in Victorian charm located two blocks off the Perryville Square. King and queen rooms with private in-room full bath, balcony, Wi-Fi, DirecTV, gourmet or continental breakfasts, brick patio and screened porch seating let you enjoy the fresh air of country living at its finest.



**Eggers & Company General Store Bed and Breakfast**  
19 PCR 328, Farrar MO  
573-824-5271 or 314-706-0159  
eggersandcompany.com  
It's not too far to Farrar! Listed on the National Historic Register, step back in time when the local general country store and Post Office was the hub of the community. Reminisce, rejuvenate and relax in a simpler past with all the modern conveniences of the present. Signature menus and full breakfasts.



**Lithium Yellow Rose Bed & Breakfast**  
144 PCR 926, St. Mary MO  
63673  
573-517-7477  
Lithiumyellowrose.com  
Located in the Mississippi River bottoms of Perry County. This charming and elegant 1904 home is a breath of fresh air to any age. Enjoy walking trails, bike trails, fishing, horseback riding and much more. Nearby local wineries, museums and antique mall.



## Hotels & Motels

**Comfort Inn**  
1517 S. Perryville Blvd.  
573-547-1727



**Super 8 Perryville**  
1119 Vincent Drive  
573-517-7888  
All rooms include in suite bathrooms, cable/satellite TV plus microwaves, mini-fridges and coffeemakers. Free WiFi. Kids 17 and under stay free. Complimentary continental breakfast, on-site gym, meeting rooms and a business center, as well as an indoor pool and parking for trucks and buses.



**Holiday Inn Express & Suites**  
2020 Jefferson St.  
573-605-1385  
holidayinnperryville@gmail.com  
Located right off of Interstate 55 at exit 129. Whether you are traveling for business or leisure, Holiday Inn and Suites provides premium guest amenities and excellent services. Enjoy the heated indoor pool for relaxation, a fitness center, free high speed Wi-Fi, flat screen LED TVs, microwave and refrigerator. Our hotel is also equipped with a conference room tailored to meet your business needs. All 75 rooms, 18 suites, and all facilities are 100% smoke-free.



**Days Inn**  
1500 Liberty Street  
573-547-1091  
Start the morning reading your complimentary newspaper while enjoying a free continental breakfast.



Take a dip in our outdoor pool, or book a room with a hot tub. Free WiFi, and a business center with copy and fax service keep you connected. We offer guest laundry facilities, free parking for RVs and trucks, and refrigerators and microwaves in every room at our pet-friendly hotel. Kids 17 and under stay free.

## Camping

**Perryville Campground**  
300 Lake Drive  
573-547-8303  
Perryvillecamp.com  
Located one mile from I-55 with over 80 pull through sites, you can choose to camp under mature shade trees with full hook ups. Also available are tent sites with electric and water or sleep beside our lake in a rustic cabin. Enjoy our outdoor swimming pool, two playgrounds, private fishing pond, meeting room, WiFi, and hiking trail. On site grocery store, laundry room, showers, dump station.

## Transportation

**SMTS**  
573-547-8016

**Bus Ta Move Party Bus**  
573-768-1688

**Vines 2 Wines Excursions**  
573-579-9009



## Recreation and Leisure

**531 Wash House**  
87 PCR 531, Uniontown, MO  
314-221-2846

**Buchheit of Perryville**  
1011 S. Perryville Blvd.  
573-547-6565

**Country Barn Antiques**  
2398 PCR 206  
573-547-2867  
Call for visit

**Country Charm Emporium**  
12155 S. Hwy. 61, Uniontown, MO  
573-495-2487

**Downtown Square & Historic Courthouse**  
15 W. Ste. Marie Street  
573-547-4242

**Grandma Bea's**  
278 Acorn Lane  
573-517-2126  
Gmabeas.net

**Karen's Hallmark Shop**  
2 E. Ste. Maries Street  
573-517-0700

**Leona's Porch Home Décor & Gifts**  
620 N. Kingshighway  
573-547-6615

**Meier's Antiques**  
2261 S. Kingshighway  
573-547-6571

**Ozarks Country Crafts**  
1601 S. Perryville Blvd.  
573-547-5574

**Perryville Pumpkin Farm**  
1410 Allens Landing Rd.  
573-513-2899  
Perryvillepumpkinfarm.com

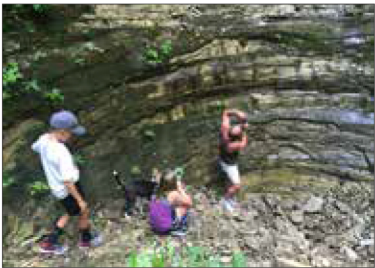
**Rozier's Mercantile**  
2 E. Ste. Maries Street  
800-359-6522

**Sophie's Home Decor & More**  
1236 W. St. Joseph Street  
573-275-1622

## Natural Areas

### Ball Mill Resurgence Natural Area

**Perry County MO**  
Enjoy a short hike? The resurgence is a karst formation wherein a sinkhole that ordinarily drains into an underground stream system will back up after a heavy rain. In the case of Ball Mill during heavy rains the resurgence backs up inside this sinkhole when the water is rolling rocks are tumbled around and somewhat polished. Hence the name "ball mill". Considered one of the best examples in the state.



### Tower Rock

**Perry County MO**  
Tower Rock, listed on the National Register of Historic Places in 1970, is a limestone rock formation and landmark island in the Mississippi River one mile south of Wittenberg in Perry County. Approximately 80 feet high during normal river levels this natural monument has been documented by river travelers, including Lewis and Clark, since 1699. Tower Rock was such an integral part of life along the river that many legends and stories have been woven about its colorful history.



### Seventy-Six Conservation Area

**Perry County MO**  
Located four miles northeast of Brazeau, experience the great Missouri outdoors on the bank of the Mississippi River with camping, fishing, hunting, hiking and bird watching. Camp site, BBQ grill, fire ring, parking lot and boat ramp.

### Legion Lake

**Perryville MO**  
Nestled right in the heart of the City of Perryville this lake has nearly ten acres of fantastic winter Rainbow Trout fishing. Summer fishing has bass, crappie, blue gill, catfish and sunfish. Lake has a boat ramp, fishing jetty, sand volleyball court, two pavilions, and bathrooms. Open daily sunrise to sunset. Special permit needed for trout.

### Perry County Community Lake

**PCR 700 Perry County**  
This 103-acre community lake offers a variety to the angler in bass, catfish, crappie and sunfish. With two picnic areas, archery range (ADA Accessible), two boat launching ramps, fishing jetties, fishing access trail for bank anglers, disabled-accessible fishing pier, and restrooms. Also, enjoy bird watching and the four-mile loop trail for hiking.



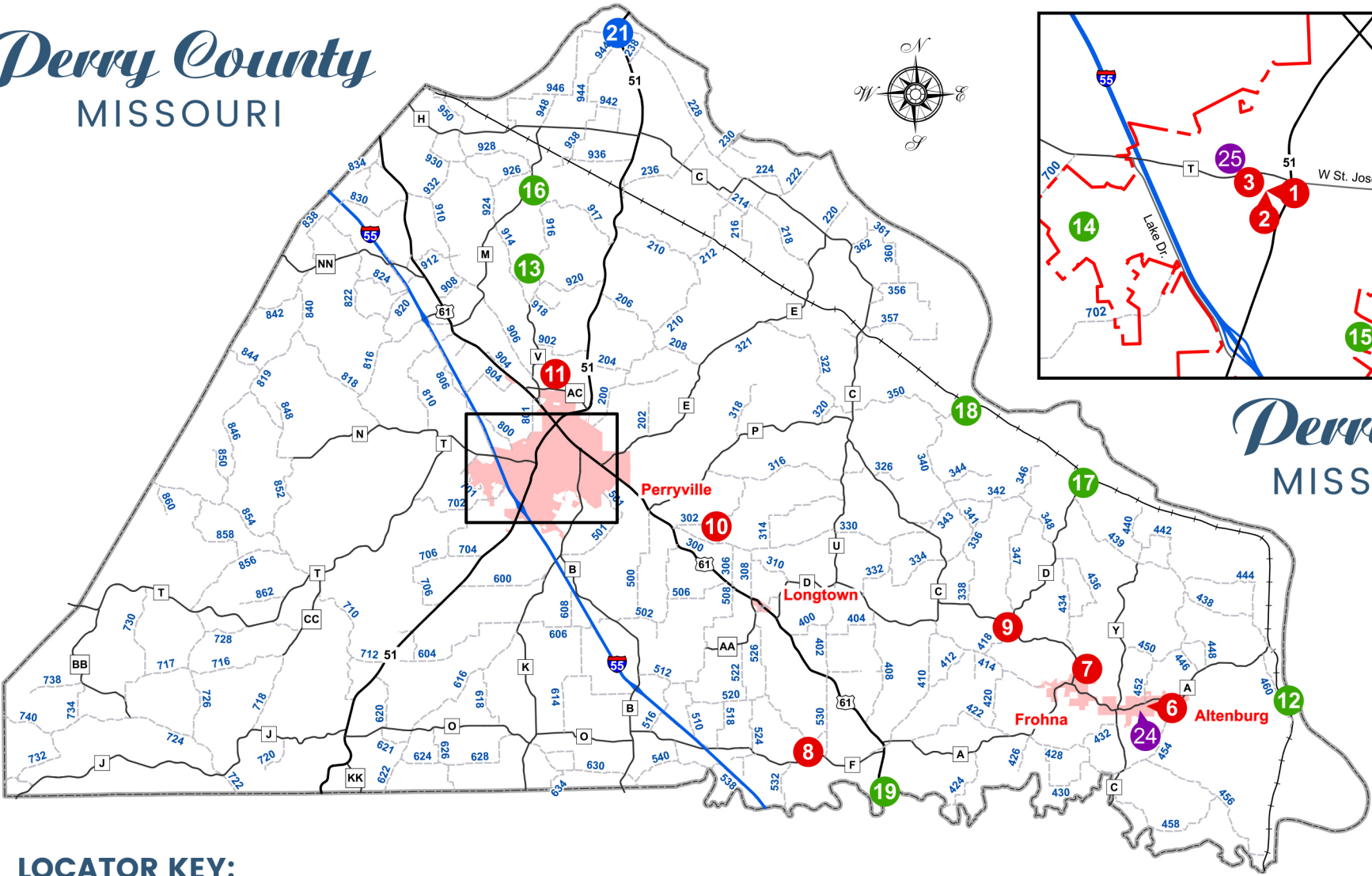
## Christmas Country Church Tour

**An annual free two-day Christmas adventure** highlights over 30 churches. This self-guided treasure hunt allows you to slow down during your holiday rush and recharge for the season. Featuring century old rural country churches, step back in time and visit churches of various denominations and cultural backgrounds. From German Lutherans to Scotch-Irish Presbyterians and English Catholics, whether they are wooden clad one-room structures without electricity or brick and mortar masterpieces, all decorated in their own unique styles influenced by the culture of their congregations. See the architecture, hear the history, enjoy the scenic countryside, experience the heritage of rural country charm and hospitality in each of these fascinating and glorious treasures. Come join us and start your next holiday tradition.





Perry County  
MISSOURI



Perryville  
MISSOURI

LOCATOR KEY:

- 1

Perry County Historical Society & Archive
- 2

Perry County Military History Museum
- 3

St. Mary's of the Barrens
- 4

Faherty House
- 5

Perry County Museum
- 6

Lutheran Heritage Center & Museum
- 7

Saxon Lutheran Memorial
- 8

Catholic Heritage Center & Museum
- 9

Brazeau Museum
- 10

Hill of Peace Lutheran Memorial
- 11

Missouri's National Veterans Memorial
- 12

Tower Rock Natural Area
- 13

Ball Mill Resurgence
- 14

Perry County Community Lake
- 15

Legion Lake
- 16

Lithium Spring
- 17

Seventy-Six Conservation Area
- 18

Red Rock Landing Conservation Area
- 19

Old Appleton Bridge
- 20

Wall of Honor
- 21

Lewis & Clark Memorial Marker
- 22

Perry County Courthouse
- 23

Perry Park Center
- 24

East Perry Fair Grounds
- 25

Seminary Picnic Grounds

Restaurants

**15 West Bar & Grill**  
15 W. St. Joseph Street  
573-547-1868

**5-Star Chinese**  
2015 Jefferson Street #30  
573-517-7333

**Acapulco Mexican Restaurant**  
525 N. Main Street  
573-517-7207

**Al's Place**  
233 Main Street McBride  
573-547-5656

**Beef O'Bradys**  
1418 W. St. Joseph Street #90  
573-605-1109

**Bill's Place**  
10001 Hwy B  
573-547-3686

**Burger King**  
1205 S. Perryville Blvd.  
573-547-2144

**Chin Restaurant  
Hibachi & Sushi Bar**  
1301 S. Perryville Blvd.  
573-605-1599

**China Buffet**  
2002 Lake Drive  
573-547-9388

**City Tavern**  
24 N. Jackson Street  
573-547-9913



**Domino's Pizza**  
110 Perry Plaza  
573-547-3030

**East Perry Pub**  
8161 Main Street, Frohna  
573-824-6017

**El Torero Mexican Grill**  
308 Perry Plaza  
573-547-3596

**Ewald's Bar-B-Q**  
18 E. North Street  
573-547-8585

**Galati's Italian Pizza & Pasta**  
124 N. Main Street  
573-517-7600

**Grayson's Bar & Grill**  
8492 Main Street, Altenburg  
573-824-5657

**Hardee's**  
11 N. Kingshighway  
573-547-5052

**Hoeckele's Bakery & Deli**  
1516 Edgemont Blvd. #10  
573-547-4506

**Kentucky Fried Chicken**  
1212 S. Perryville Blvd.  
573-547-6277

**Mary Jane Burgers & Brew**  
102 N. Jackson Street  
573-547-6279

**McDonald's**  
1302 S. Perryville Blvd.  
573-547-1650

**Park-et Restaurant**  
211 S. Kingshighway  
573-547-4147

**Pizza Hut**  
1418 W. St. Joseph Street  
573-547-7833

**Smokin Double Barrels BBQ**  
1324 W. St. Joseph Street  
573-547-2800

**Sonic Drive-In**  
18 S. Perryville Blvd.  
573-517-0832

**Spillway**  
14782 Hwy T  
573-547-9916

**Stonie's Sausage Shop**  
1507 Edgemont Blvd.  
573-547-2540

**Subway**  
1527 S. Perryville Blvd.  
573-547-1112

**Subway**  
620 N. Kingshighway  
573-547-3535

**Taco Bell**  
1303 S. Perryville Blvd.  
573-547-9100

**The Old Bank Coffee Shop**  
8526 Main Street, Altenburg  
573-824-3020

**Villainous Grounds**  
26 N. Jackson Street  
573-605-1333

**West End Tavern & Grocery**  
6153 Hwy A, Frohna  
573-824-5281



Wineries & Breweries



**The Barrens Winery**  
2815 N. Hwy 51  
573-547-6968  
Thebarrenswinery.com

At the Barrens Winery you will enjoy a peaceful yet eventful environment. Spend the weekdays outside listening to the wind blow through the trees while sipping on one of our delectable original tasting wines. Join us for weekends with live music that everyone loves to dance to. We offer a full kitchen with appetizers, sandwiches, and entrees; along with an assortment of beers. Family owned and operated.

**Hemman Winery**  
13022 Hwy C, Brazeau  
573-824-6040  
Hemmanwinery.com

Walking through the front door at Hemman Winery is a lot like taking a step back in time. Hear the sounds of your boots cross the worn wooden floor. Browse through the old store shelves that nowadays hold bottles of wine and reminders of another time. Locally owned, Hemman Winery makes wine for everyone with award winning semi and sweet wines. Sit on the porch, inside at the barrel tables or in the wine garden and enjoy food, music and, of course, wine. Weekend music and special activities. If walls could talk, I'm sure you would hear laughter and storytelling.



**Jackson Street BrewCo**  
106 N. Jackson Street  
573-547-6279

Jackson Street BrewCo, where our Badass Pie Slingers use our wood fire-brick oven to serve up piping hot pizzas, dreamed up by our very own chef, Matt. We also offer Appetizers and Brick Oven Sandwiches. You can wash this all down with one of Jackson Street BrewCo's eight craft beers, rotated daily, brewed in-house and served by our knowledgeable Beertenders. Love Craft Beer? Join Jackson Street's Brew Society! You will be part of the Jackson Street BrewCo Beer School and a list of other amenities! You will also be invited to Jackson Street BrewCo events, including the Brewers Olympics and The Birthday Bash Luau! All taking place at the first brewery in Perry County in over one-hundred years!



# Historic Attractions

## Saxon Lutheran Memorial

Listed on the National Register of Historic Places, visit one of the best living history museum in the region. Situated in the rolling hills of east Perry County and deeply rooted in German heritage, explore 13 hand-hewn log buildings in a village setting while learning the ways of early Perry County pioneers. Saxon Lutheran Memorial depicts aspects of the German Lutheran migration in 1838-1839 and displays the domestic and farming artifacts of 19th century German rural settlements. The annual Fall Festival is held on the second Saturday in October. Gift shop on site. For appointment and tour information, please contact 573-824-5404



## Lutheran Heritage Center and Museum

Professionally interprets and beautifully preserves the history of the Lutheran religion and their descendants since 1836, their quest to get here, their trials, tribulations and triumphs. The first log cabin college west of the Mississippi River is a German cultural experience. Open daily from 10:00 a.m.-4:00 p.m. Gift shop on site. For more information, contact 573-824-6070 or visit [www.altenburgmuseum.org](http://www.altenburgmuseum.org)



## Hill of Peace Lutheran Memorial

Bavarian Germans who settled just outside of Perryville in the 1830's felt so strongly about the importance of peace that they named their town Friedenberg (Hill of Peace) and their church built in 1885 Peace Lutheran Church. Today it proudly serves as a "walk-in history book" that vividly demonstrates the changes in life of the rural church and community that was so important in previous eras. The Hill of Peace Memorial site also includes a historic log cabin with artifacts and a brick school house that serves as a visual reminder of the high value placed on Christian education by the settlers. 510 PCR 304 Perryville. Tours by appointment or for more information, contact 573-517-0102



## Faherty House

Owned by William P. Faherty this historic rock home was built in 1850 with a brick addition in the 1880's. One of the first homes built, in town, it is a wonderful example of early Perryville, Missouri. Now cared for by the Perry County Historical Society take a step back in time as you visit the bedroom with its roped bed strategically placed over the basement kitchen to provide heat in the winter, the beautiful Victorian parlor with its grand piano and the children's room complete with authentic photographs of the Faherty family. Tours by appointment, contact 573-768-2470

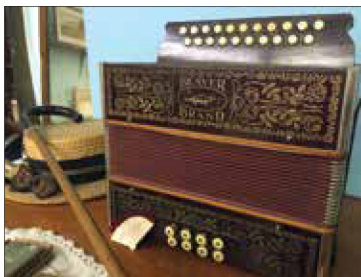
## Perry County Museum

Located at the entrance to the Perryville City Park, this two-story brick house designed and built in 1881 by German immigrant, Joseph Duerr has been home to the Perry County Museum since 1990. From arrowheads to quilts, tools to religious artifacts, business advertisements to school memorabilia, it is full of everything "Perry County". A trip back in time treat for any age. Open on Tuesday and Thursday from 1:00 p.m.-3:00 p.m. and Saturday from 9:00 a.m.-12:00 p.m. For more information, please contact 573-547-6383



## Catholic Heritage Center & Museum

Featuring local memorabilia and Catholic religious artifacts from the once thriving communities of Biehle and Apple Creek. Experience rural Perry County and the people who immigrated here. Both German communities, deeply rooted in their Catholic faith, were centered around their churches. Both settled long before St. Maurus was built in 1870 and St. Joseph in Apple Creek in 1884, and still serve as anchors for these once hustling and bustling communities. The Catholic Heritage Center & Museum is a collection of artifact from neighboring locals. It is a testament of their heritage, religion and history. Located next to the St. Joseph Church and outdoor shrine built in 1903. Tours by appointment, contact 573-788-2730



## Brazeau School Museum

This museum once served as Brazeau Academy, a two-year high school, and a country school for the children who lived in the Brazeau area. Built in 1879, the schoolhouse now serves as a local historical museum preserving artifacts of Brazeau's past. Fine examples of lace, needlework and artifacts of the early 1900's. For more information call 573-824-5504



## Perry County Historical Society, Research Library and County Archive

For any level of researcher locally, regionally or for your family genealogy. This library has everything for your Perry County search from family history to various original county records. Gift shop on site. For hours and more information call 573-768-2470 or [perrycountyhistoricalsociety.org](http://perrycountyhistoricalsociety.org)



## Perry County Military History Museum

Representing all Perry County service men and women who served in all wars, capturing their heroic stories of service, dedication and sacrifice paid by both the soldier and the families left behind to wait. Open Tuesday 1:00 p.m.-3:00 p.m., Wednesday 6:00 p.m.-8:00 p.m., Thursday 1:00 p.m.-3:00 p.m. or by appointment. For more information contact 573-517-2463



## Missouri's National Veterans Memorial

Missouri's National Veterans Memorial is the only full-size exact replica of the Vietnam Veterans Memorial in Washington, DC. Experience a place of healing, reflection and honor dedicated to our military veterans. Museum and Visitors Center honor all branches and eras of service. For more information, call 573-605-1305 or [www.americaswall.com](http://www.americaswall.com)



## National Shrine of our Lady of Miraculous Medal & Saint Mary's of the Barren Church

Nationally recognized, the Shrine and church have welcomed visitors since 1818. St. Mary's of the Barrens Church is modeled after the Vincentian Motherhouse chapel in Rome, Monte Citorio. Decorated with beautiful paintings and intricate design work on the walls and ceilings make it a masterpiece nestled among a beautiful Rosary Trail and an outdoor grotto. Gift shop on site. For more information, please contact 800-264-MARY, 573-547-2508 or visit [www.amm.org](http://www.amm.org)

